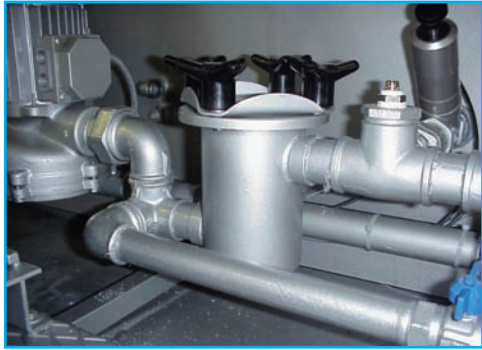


Value Added Features



Pre-Pump Strainer

Proven Design Elements

- **Double Incline Self-Cleaning Base Tanks:**

Another Columbia/ILSA exclusive design element is our double incline base tanks. Our base tanks are pitched from front to rear and then again from side walls to center. This design allows for sediment and water to move to the suction outlet located at the lowest point of the grades thereby reducing buildup and accumulation of contaminants load after load.

- **Pre-Pump Strainer:**

Pre-pump strainer keeps pins and other debris from clogging the pump. Protects pump seal from deteriorating for longer service life and less chance of down time. Simple daily maintenance ensures reliability of solvent flow throughout the work day.

- **Rear Drum Wash Down**

Quick -Dri Elements

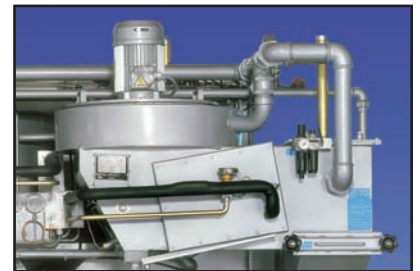
- **Patented Air Power Loading Door:**

The innovation patented loading door is one of the reasons for the fast drying time in our “Quick-Dri” Series of machines. Features include stainless steel construction, built-in deflector, gentle drying, and less lint. No “over-drying” of the garments occurs. Columbia/ILSA Quick-Dri systems are notably the most effective use of an air flow in closed circuit drying systems.

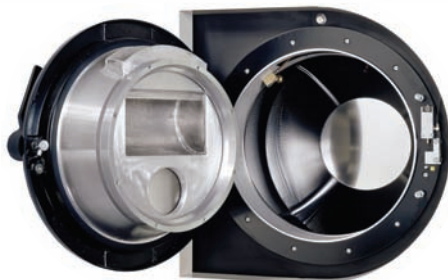
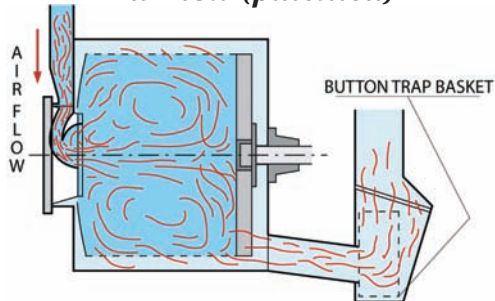
- **Double Lint Filter plus Safety Filter**

- **EZ Access Self-Sealed Refrigeration Coils**

Our classic refrigeration group design continues to allow easy accessibility when servicing the refrigeration, heat pump and solvent cooling coils. Engineered and designed with the operator in mind, this unique and well-proven system allows for the removal of individual refrigeration group components without the loss of Freon or the removal of the entire system. This separated system has influenced competitors to “boldly” imitate this Columbia/ILSA original design. Naturally, we are flattered.



Air Flow (patented)



Patented Loading Door